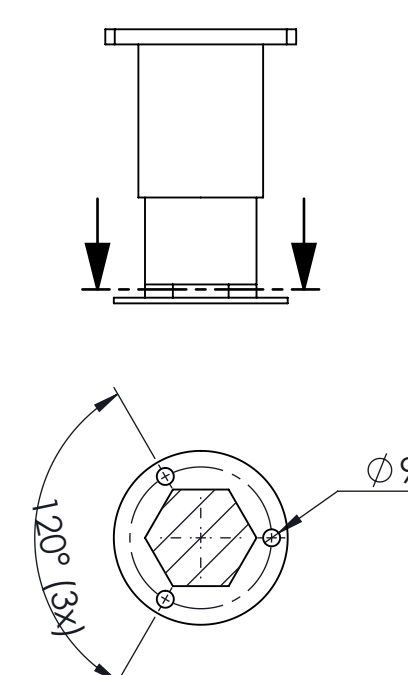
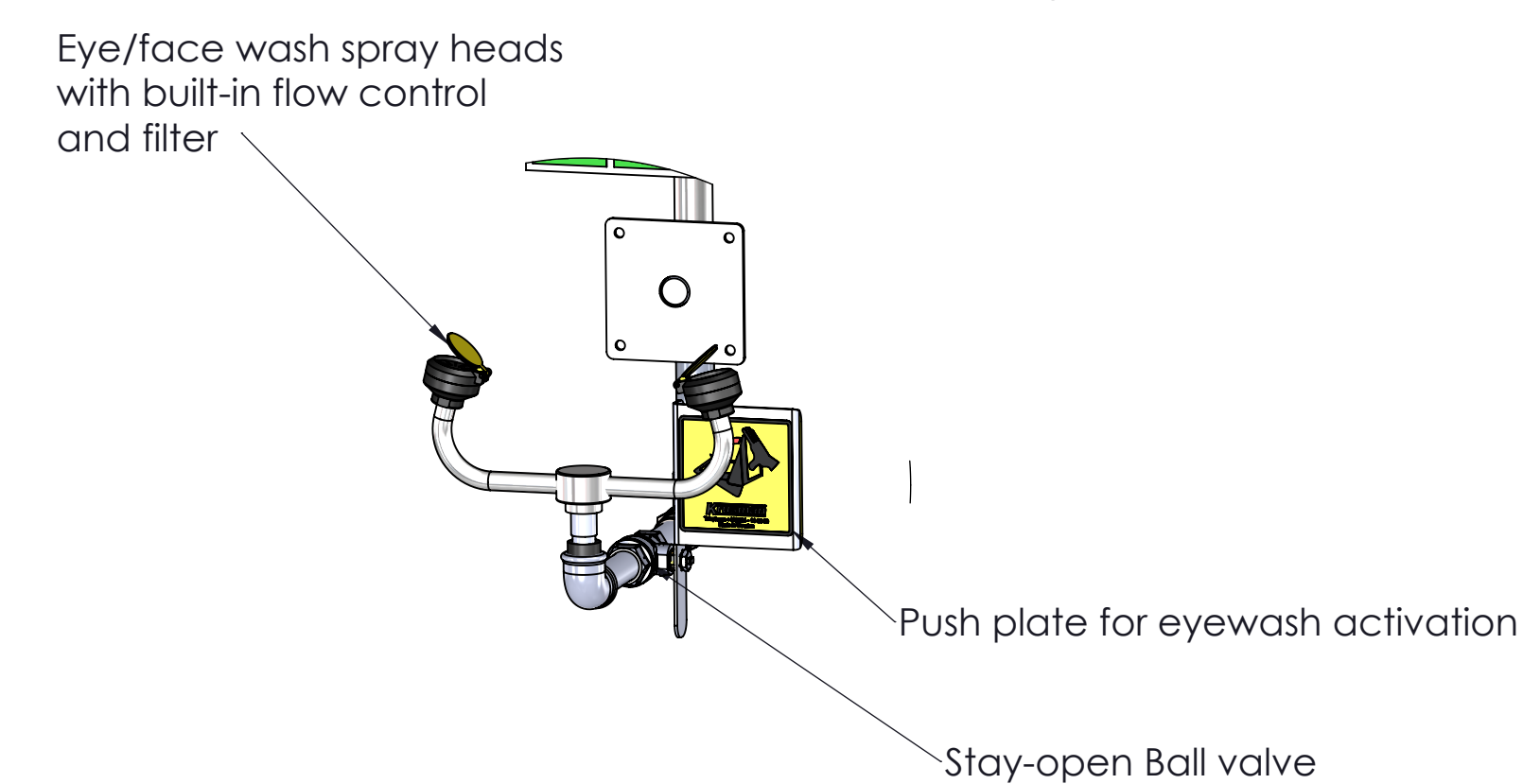
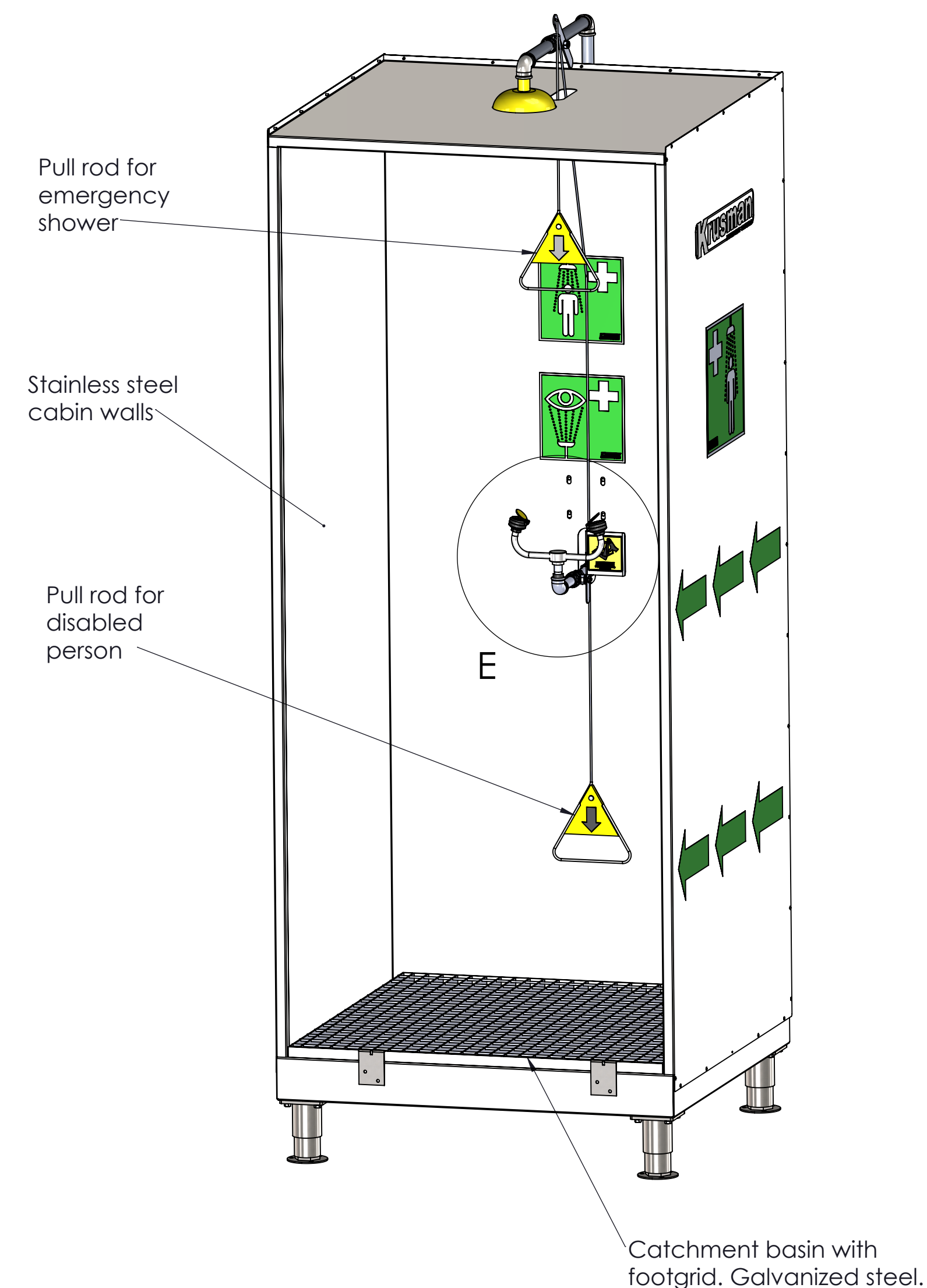


Grid dimensions:
930x930mm

SECTION F-F
SCALE 1 : 10



General information:

Equipped with a stainless steel catchment basin for collection of contaminated water. Footgrid made of galvanized mild steel.

Catchment basin drain connection:
2" Female BSP thread.

Eyewash model 3830 with integrated flow control and filter in each spray head. The eyewash is self-draining.

The water supply should be designed for a minimal flow of 76 l/min at a pressure of 2,4 bar.

Cabin walls are manufactured of SS304.

The emergency shower is manufactured of SS316L.

Product design and performance in accordance with ANSI/ISEA Z 358.1 standards.

Flow rate emergency shower: 76l/m
Flow rate emergency eyewash: 28l/m

Weight approx 125kg.

Krusman
EMERGENCY SHOWERS

Phone: +46-(0)21-14 92 00
Website: www.krusman.com

Emergency Shower Booth
Stainless steel edition

Drawing ID R3020