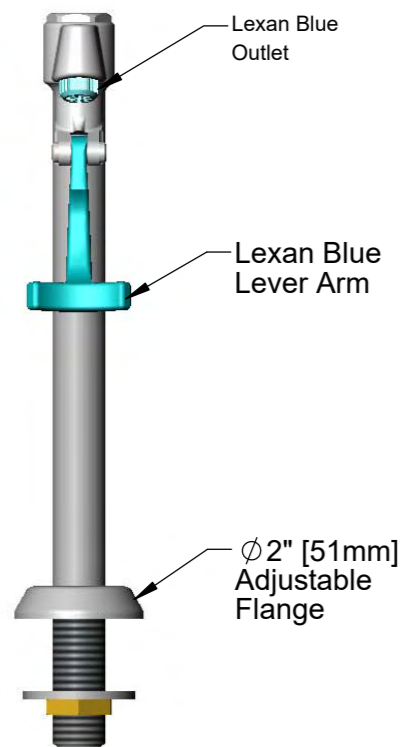




Volume Control Adjustable w/ Screwdriver

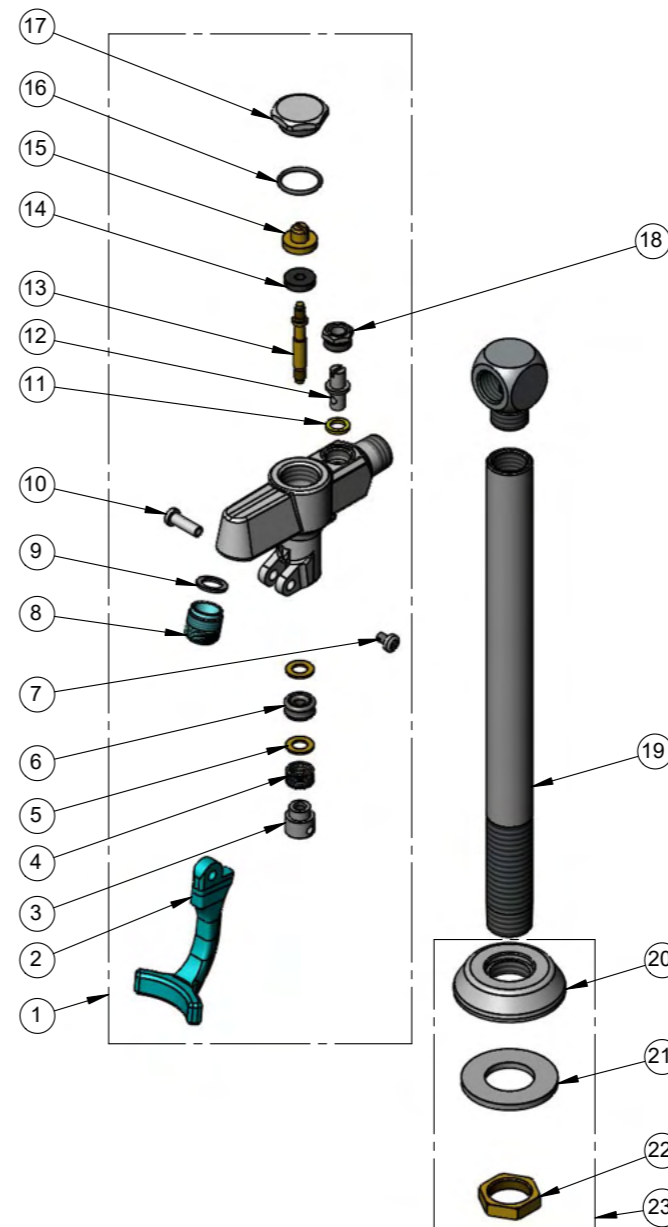
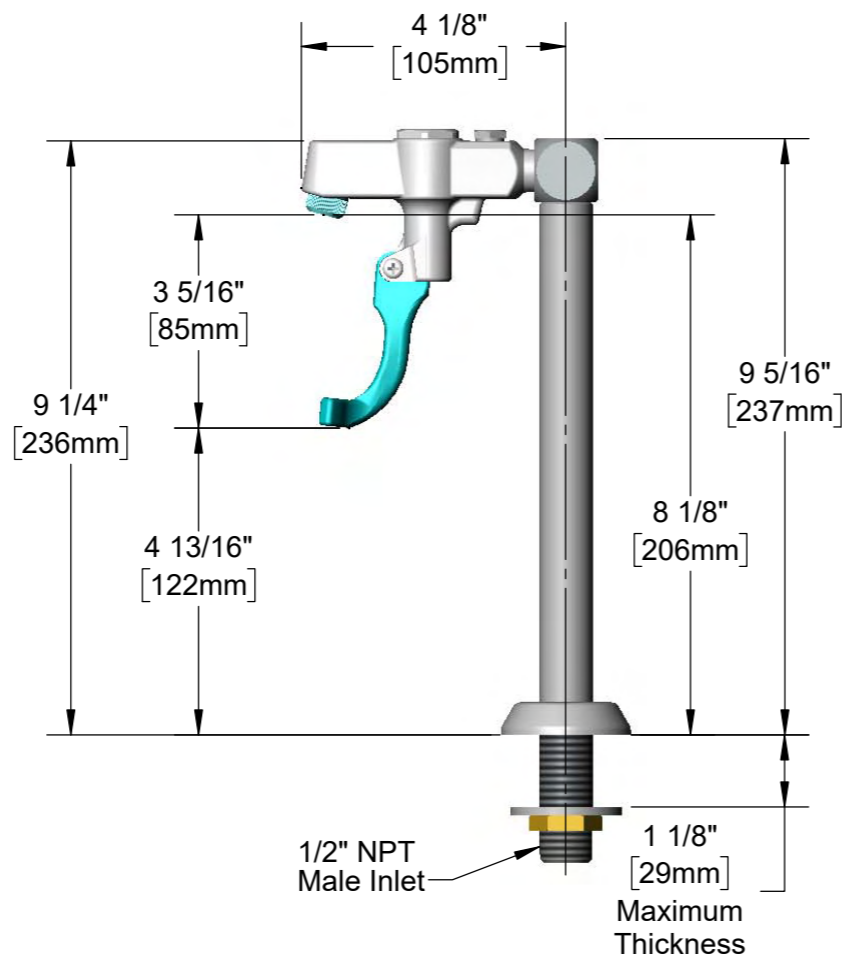


Lexan Blue Outlet

Lexan Blue Lever Arm

Ø2" [51mm] Adjustable Flange

Rough-In Requirement:
Ø1" [25mm] Hole



ITEM NO.	DESCRIPTION
1	Wall Mount, 3/8" Male NPT Retro Glass Filler
2	Lever Arm, Retro Glass Filler
3	Push Button, Retro Glass Filler
4	Spring
5	Bonnet Washer
6	Packing Seal
7	Spray Valve Handle Screw
8	Outlet Tip, Retro Glass Filler
9	Washer, Retro Glass Filler Outlet
10	Spray Valve Handle Nut
11	Washer, Volume Control
12	Stem, Retro Glass Filler Volume Control
13	Stem
14	Seat Washer
15	Seat Washer Holder
16	O-Ring
17	Hex Cap
18	Nut, Retro Glass Filler Volume Control
19	Pedestal
20	Adjustable Deck Flange
21	Pedestal Washer
22	Shank Lock Nut
23	Adjustable Deck Flange Repair Kit

This document must not be copied without our written permission, and the contents thereof must not be imparted to a third party nor be used for any unauthorized purpose. Contravention will be prosecuted.

Företag/Company	Konstruerad Av/Designed by	Godkänd Av/Approved by	Datum/Date	Skala/Scale	
 +46 (0)21 14 92 00 www.krusman.se		DK	2023-06-29	N/A	
Benämning/Description			Format/Size		
KND-WTE-GF (RSK 7635005)			A3		
Water siphon 1/2" NPT Male			Ritningsnummer/Drawing number		
Installation drawing			RKND-WTE-GF		
Rev	Blad/Sheet				
0	1 (1)				